

3

Oct. 1909  
BRANDON  
VT.

PROSPECT

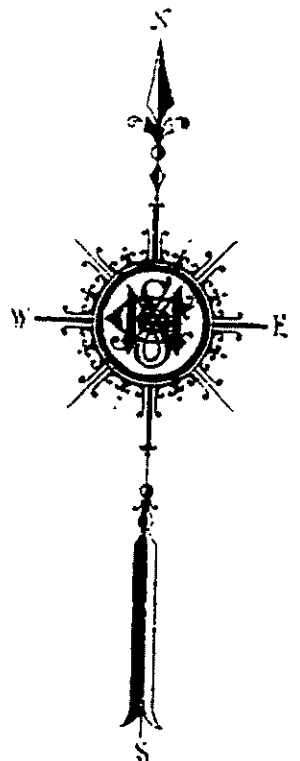
SEMINARY PL.

CENTER

CENTER

PARK

Neshobe River



Scale of Feet.  
0 50 100 150

EPISC. CHURCH  
Cong. Electric  
Wm. J. Adams

TOWN HALL &  
OPEN Hg.  
West Electric  
Wm. J. Adams

H.D. BRIGGS  
CARRIAGE WORKS

H.D. BRIGGS  
PLANING MILL  
Power Water  
No Fire Apparatus  
No Vent or Light

Sash, Doors & Blinds

Furniture  
Furniture  
Storage

LIVERY

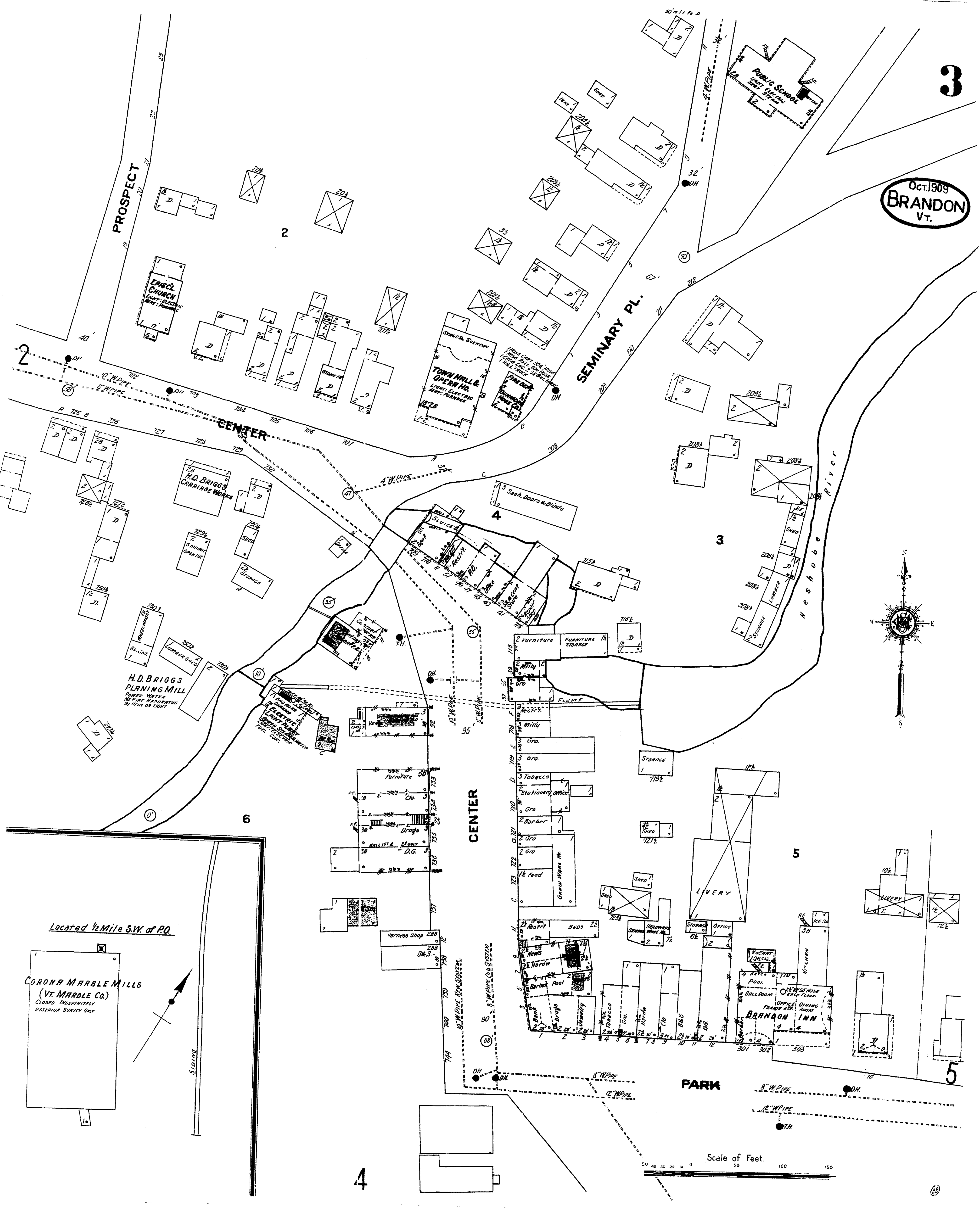
BRANDON INN

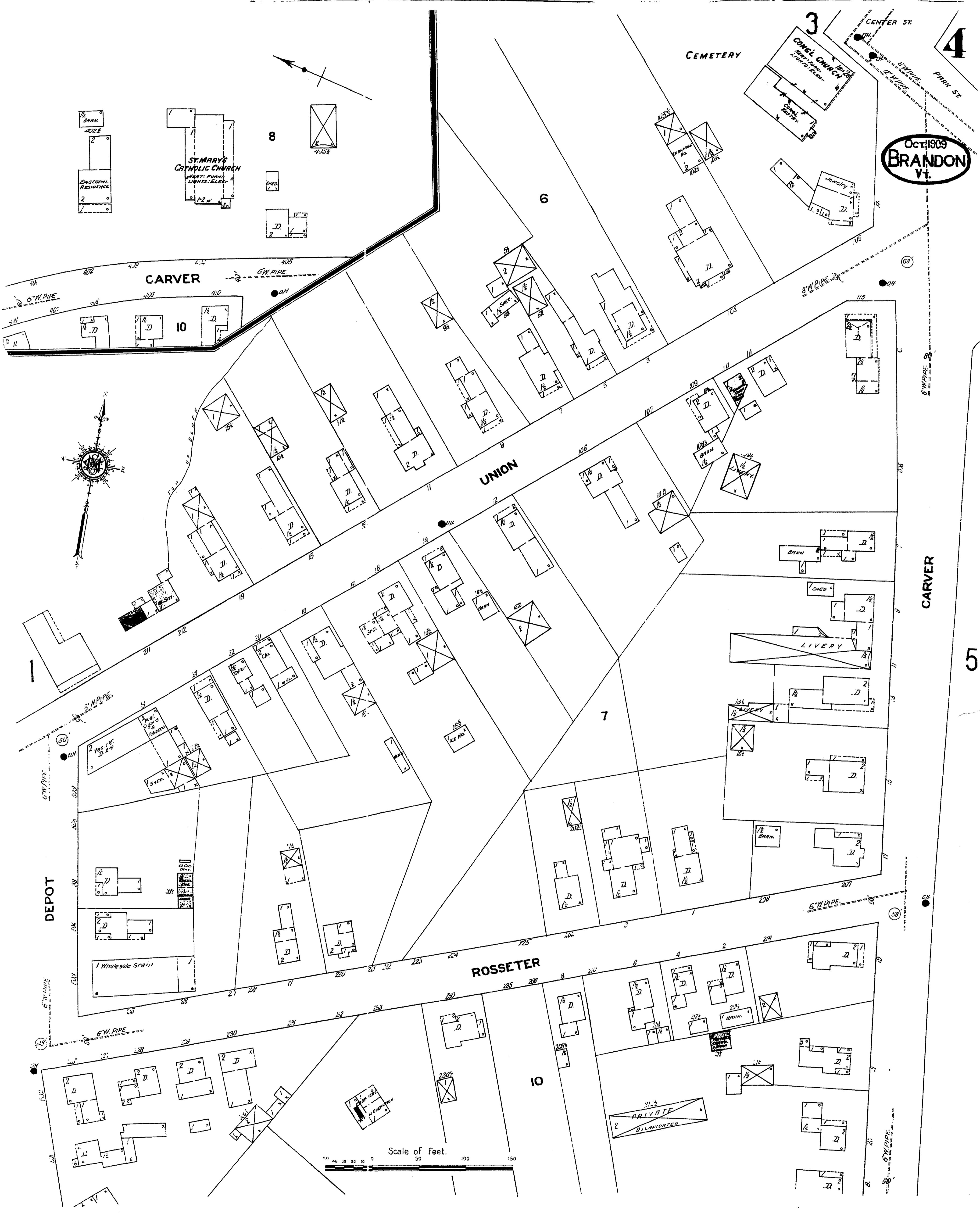
Located 1/2 Mile SW of P.O.  
CORONA MARBLE MILLS  
(VT. MARBLE CO.)  
CLOSED. INDEFINITELY  
EXTERIOR SURVEY ONLY

SLIDING

4

5





Oct. 1909  
**BRANDON**  
Vt.

Scale of Feet.  
0 50 100 150

**CARVER**

**UNION**

**ROSSETER**

**DEPOT**

**CARVER**

**CEMETERY**

**ST. MARY'S CATHOLIC CHURCH**

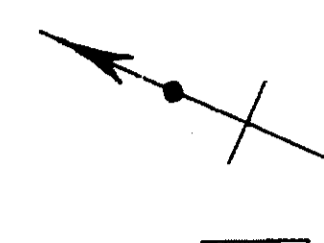
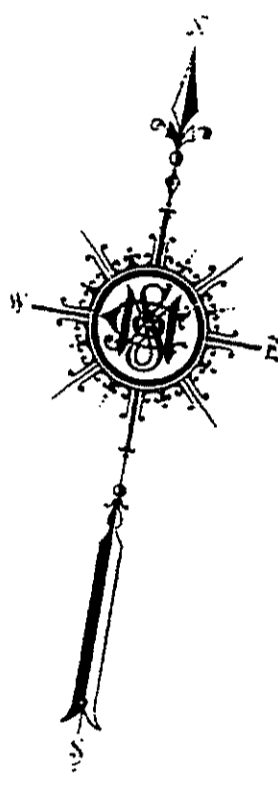
**CONG. CHURCH**

**LIVERY**

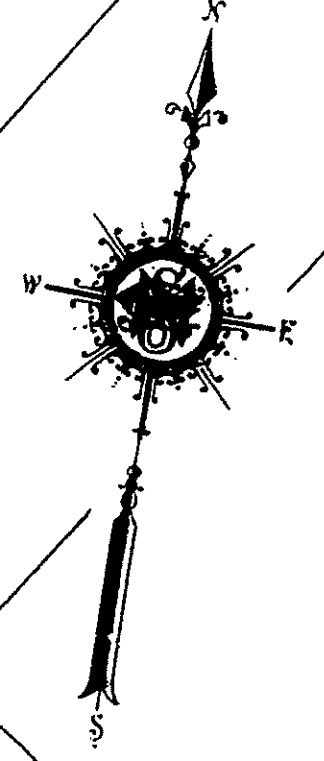
**PRIVATE**  
**DILAPORATED**

**ESSEX RESIDENCE**

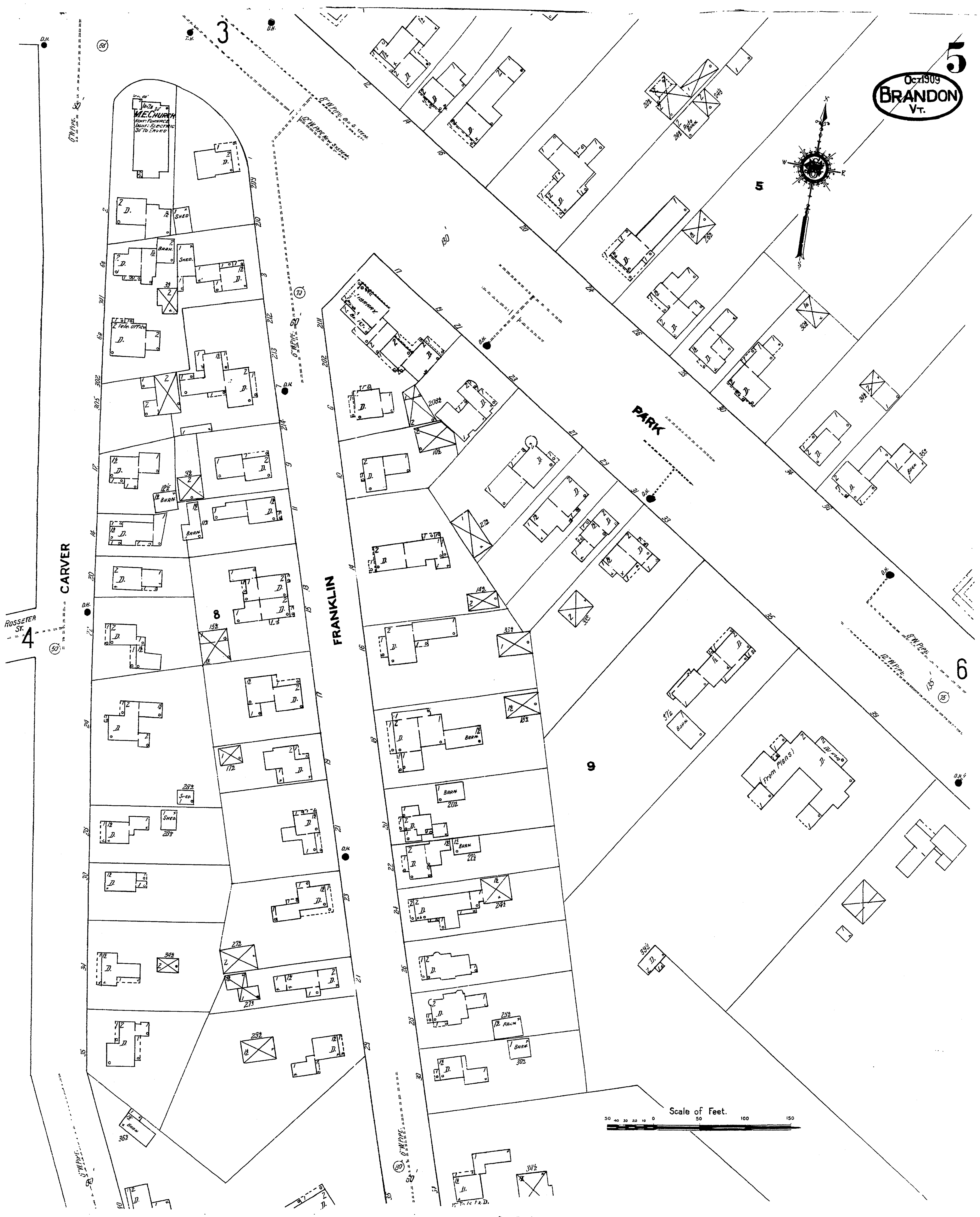
**Wholesale Grain**



Oct 1909  
**BRANDON**  
Vt.



Scale of Feet.  
50 100 150



**At FOREST DALE**  
 Located 3 Miles N.E. by E of P.O.

Oct. 1909  
**BRANDON**  
 VT. **6**

**NEWTON & THOMPSON MFG CO.**  
 LOCKED CORNER BOXES & TURNINGS.  
 NIGHT AND SUNDAY WATCHMAN, NEWMAN PORT CLOCK, SINGING BIRCH BUNDS -  
 POWER AND HEAT, STEAM, FUEL, WOOD AND WASTE - LIGHTS, ELECTRIC -  
 HYDRANTS AS SHOWN AND 60' 2" CR. HOSE SUPPLIED BY BLIND, 5" X 4" -  
 TAKING WATER FROM RIVER AND FROM BRANDON SUPPLY BY BLIND, 5" X 4" -  
 PERFORATED WATER PIPE IN MAIN MILL. ONE HAND FOR WATER BLS & PILES  
 THROUGH - SHAVINGS FROM BOX SHOP BLOWN TO BULLER HOUSE.

**HORN CROCKETT & CO.**  
 CHINA CLAY REFINERY.  
 NIGHT & SUNDAY WATCHMAN, NO CLOCK -  
 HEAT, STEAM, POWER, STEAM, FUEL -  
 COAL, LIGHTS, OIL, 200' 2" CR. HOSE -  
 100 LBS 5" X 4" IN SHAFT.

**At FOREST DALE**  
 Located 3 1/2 Miles N.E. of P.O.

