

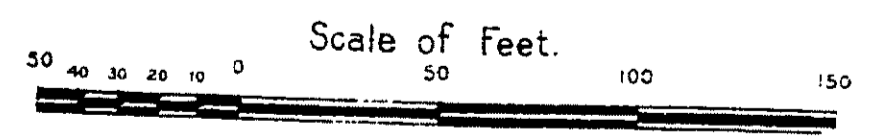
WATER FACILITIES: WATER WORKS INSTALLED 1870. ... FIRE DEPT: VOLUNTEER; 35 MEN, 1 CHIEF, 2 B.R.'s.

Table with columns for STREET, SEMINARY PLACE, and FIRE DEPARTMENT. Lists various streets and their corresponding block numbers and department assignments.

*Indicates only one side of Street shown.

Detached Fr. Div's.

The BACKUS CO., MFGS OF GAS HEATERS. ... WATER, GASLINE FOR THE TOWN.



PROSPECT

AT FORESDALE,
3 Miles N.E. of Town Hall.

DEC. 1904
BRANDON
VT.

NEWTON & THOMPSON Mfg Co.
MFRS OF LOCKED CORNER BOXES & WOOD TURNERS.

NEAR WAREHOUSE, NEWTON CORN, IS SHIP'S
POWER: WOOD AND STEAM; HEAT: STEAM
FUEL: WOODS, LUMBER, ELEC. AND OIL; WOODS AND
OIL, AND STEAM, PORTLAND CEMENT IN BAGS AND
TORNING AM. F. P. IN ENGINE RM. BARRELS AND
PAKES THROUGHOUT - HAND ENGINE.

Neshobe

River

ROAD

PARK

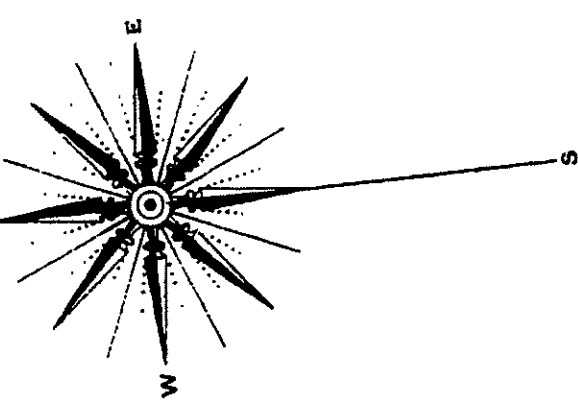
PEARL

GROVE

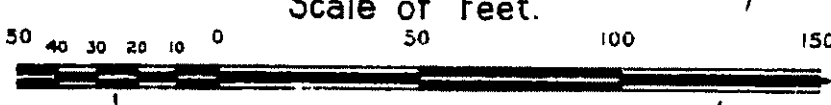
CHAMPLAIN

BAPTIST CHURCH

NEAR: FURNACE,
LIGHTS, ELEC.

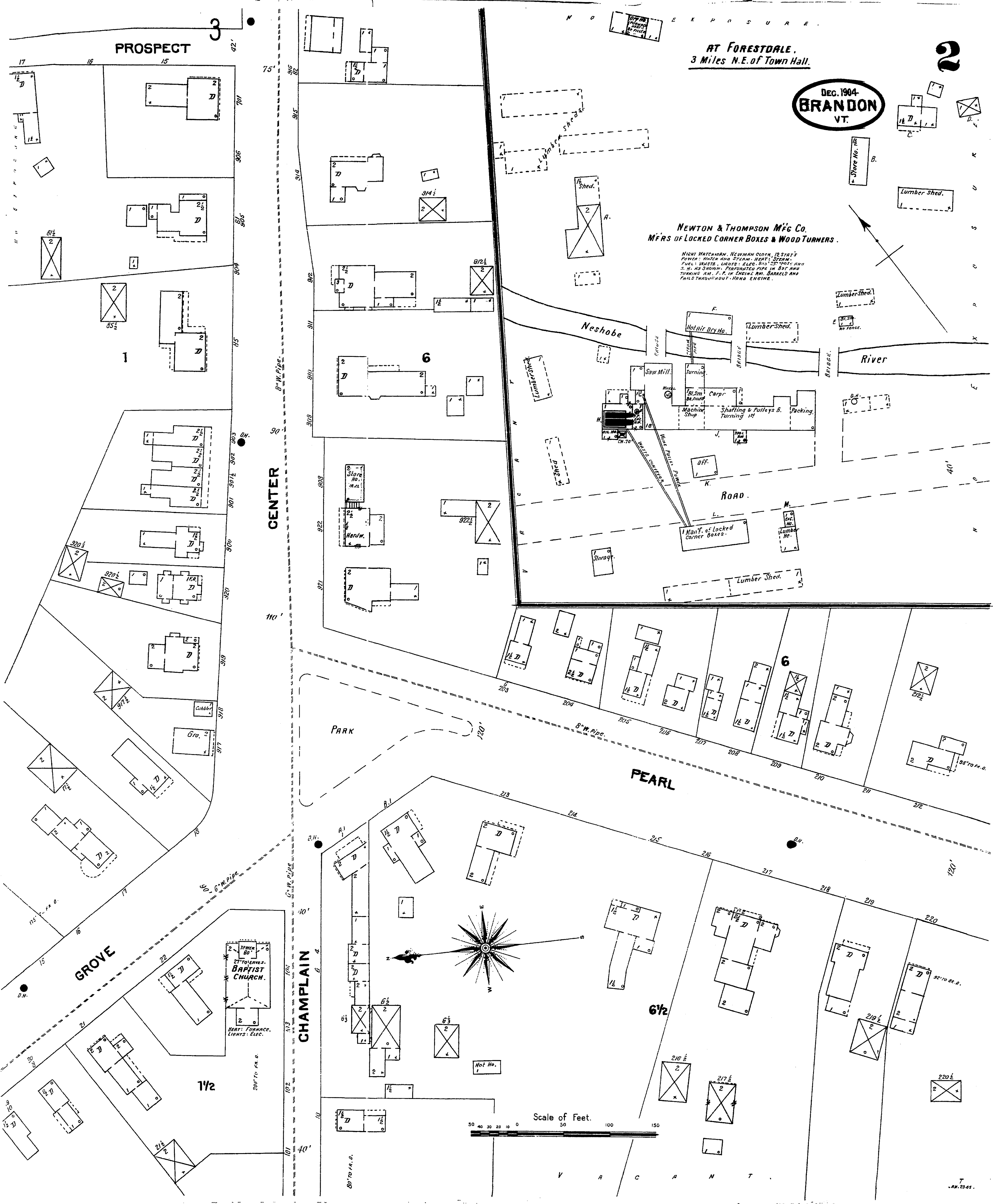


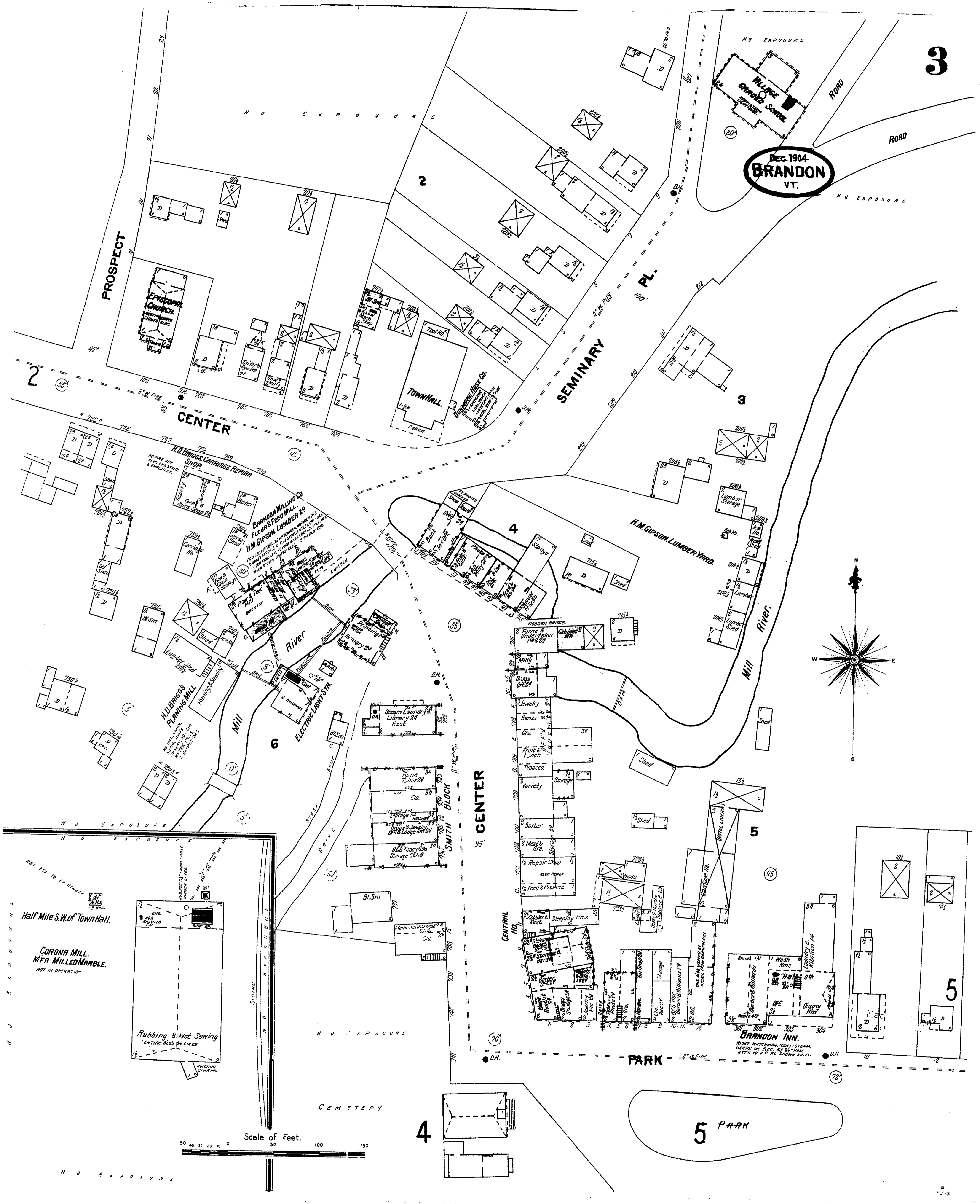
Scale of Feet.



V A R C A N T

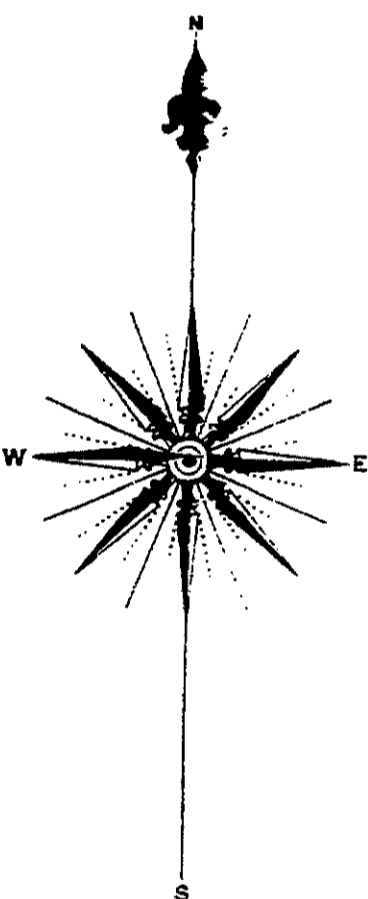
AN. 2245.





Dec. 1904
BRANDON
 VT.

Scale of Feet.
 0 50 100 150



3

2

4

3

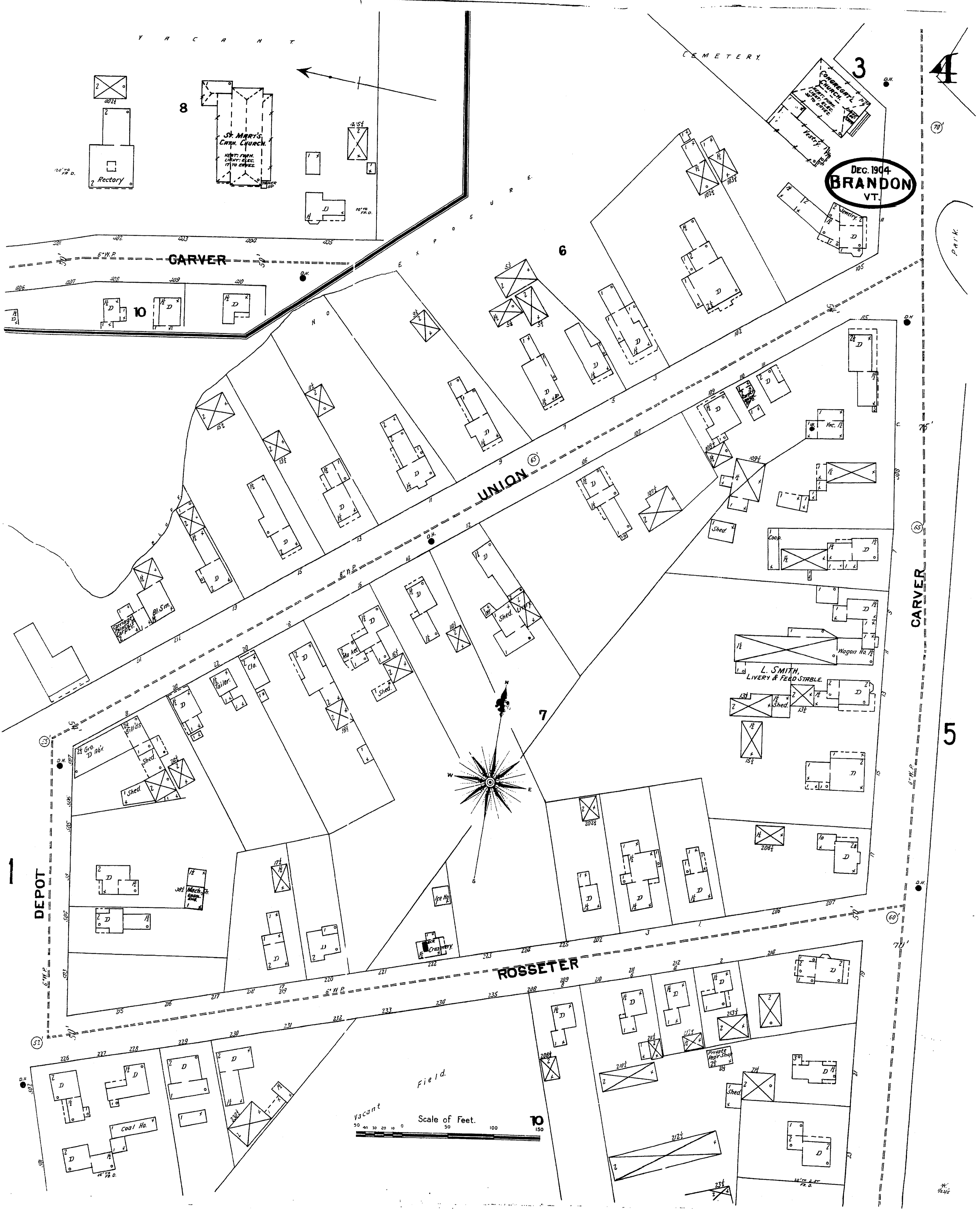
6

5

5

4

5



DEC. 1904
BRANDON
VT.

UNION

CARVER

CARVER

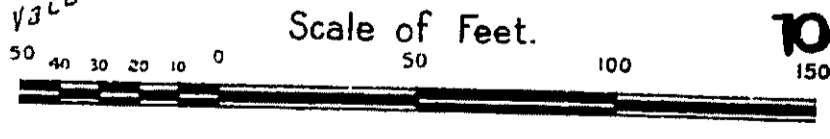
ROSSETER

DEPOT

Field

Vacant

Scale of Feet.



4

3

8

6

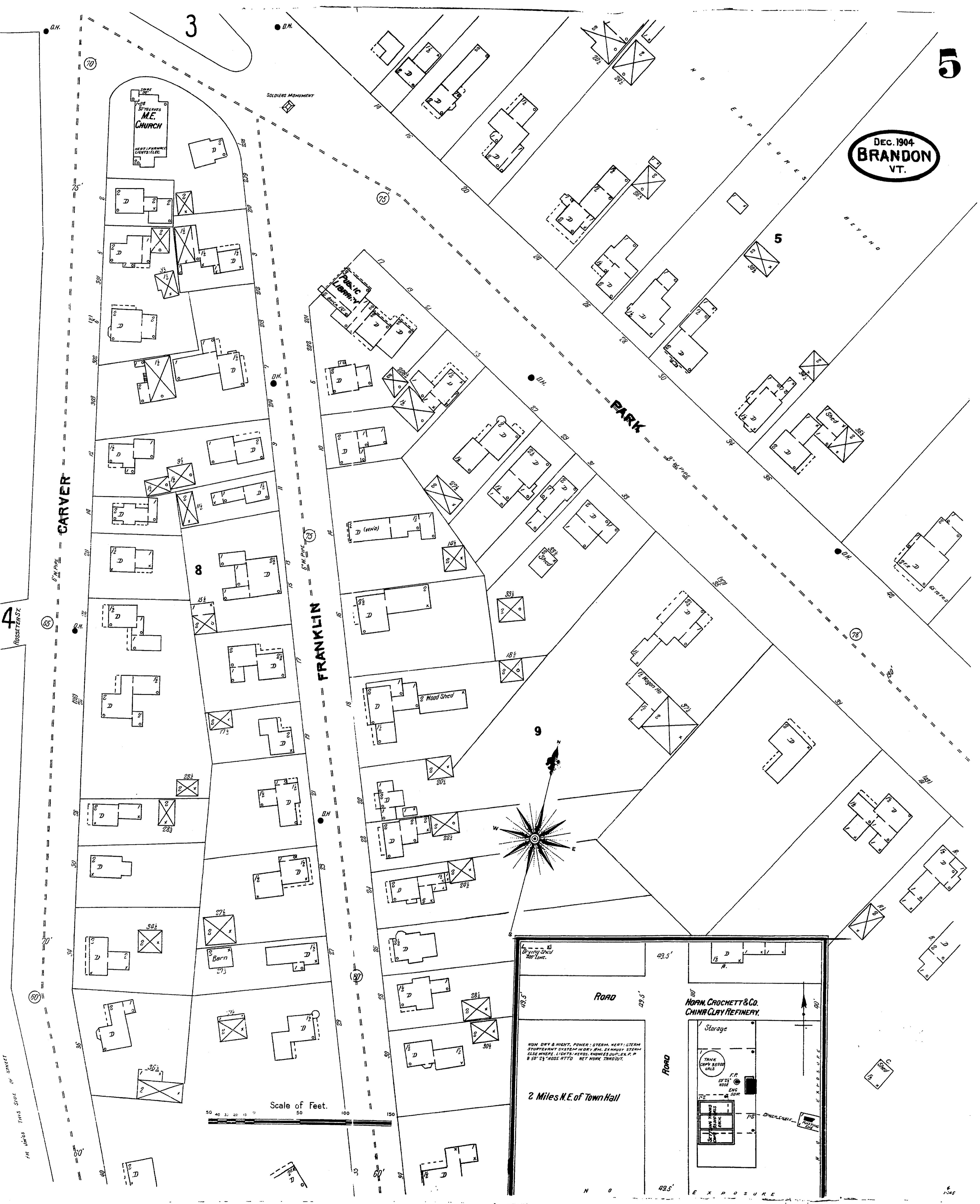
10

7

5

1244

DEC. 1904
BRANDON
VT.



THIS SIDE OF STREET

Scale of Feet.

